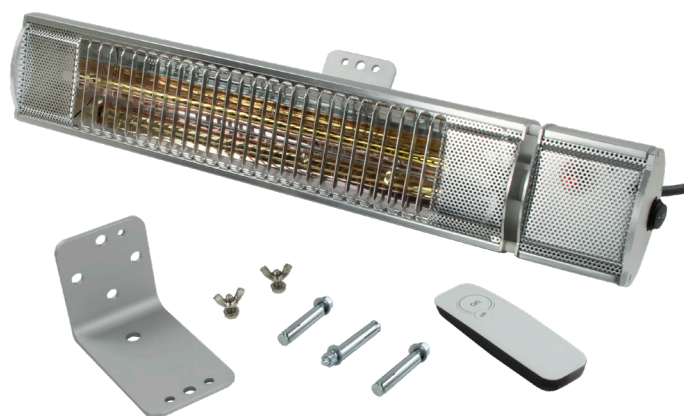


2.2kW Quartz Patio Heater c/w remote control

Product Ref: **LEVQ22RM SIL**

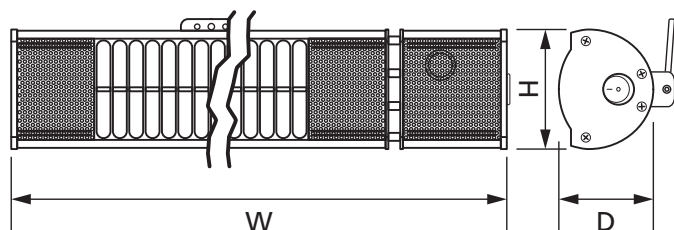
Technical Features:

- Uses radiant heat to warm people and objects
- Weatherproof and suitable for outdoor use
- Short wave (IR-A) long life gold infrared quartz lamp
- Aluminium construction
- Efficient parabolic reflector system
- Heat control by remote control
- Mounting bracket kit and 1.8m cable with plug



Product Specification

Cable Length	1.8m
Class	Class I
Colour	Silver
Compliance	UKCA, CE, RoHS
Coverage	10-15m ²
Element type	Quartz
Frequency	50Hz
Guarantee	2 Years
IP Rating	IP65
Material	Aluminium
Mounting	min 1.8m from floor
Number of Lamps	1
Standards	EN 60335-1, EN 60335-2-30
Suitable for	Outdoor Use
Supplied With	Long Life Gold Lamp, Mounting Bracket Kit, 1.8m Cable with BS Rated plug and remote control
Voltage Rating	230V
Wattage	2.2kW
Weight	2.160kg
Depth	77mm
Height	100mm
Width	601mm



Errors and omissions excepted (E&OE). All information is subject to change without notice and is correct at the time of print. Refer to issue number and date below.

Tel: +44 (0)1302 765 563 • levante-products.com • [@Levanteinfo](https://twitter.com/Levanteinfo)