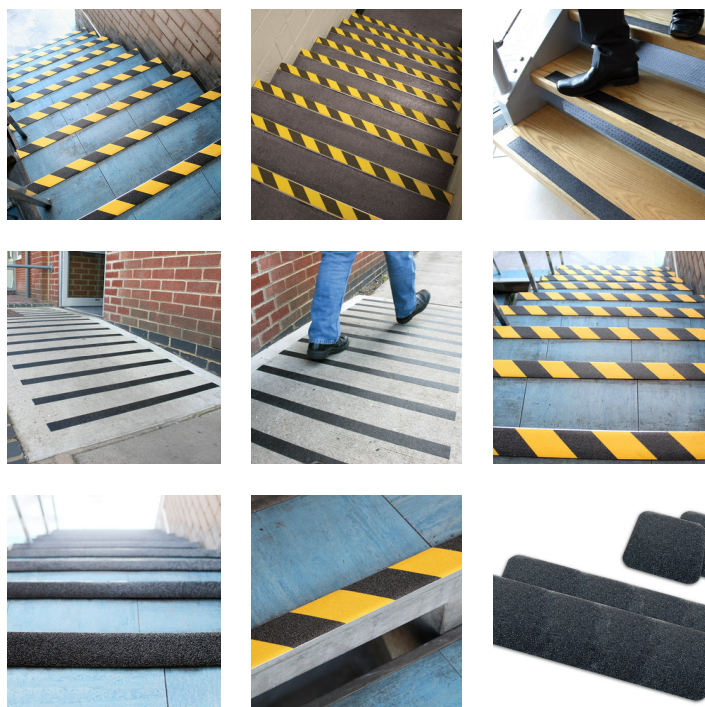


Gripfoot

Improve grip on smooth surfaces with an abrasive grit finish

- Self-adhesive tapes, cleats or tiles with an abrasive grip surface which helps to improve anti-slip properties.
- A hardwearing and easy to install solution to help prevent slips and trips.
- Available in a range of colours, including a hazard version which
- provides high visibility in darkness and low light conditions.
- Gripfoot Tape – versatile for floor surfaces, machinery and vehicles.
- Gripfoot Cleats (rectangular) are designed for use on steps and stairs.
- Gripfoot Tiles (square) are ideal for increasing safety on smooth, tiled floors.
- Slip tested to DIN 51130.



Styles Available



Black



Yellow



Red



Luminous



Yellow / Black



Red / White



Green



Clear



Blue

Parts

Part Number	Size	Colour	Weight (kg)
GF110001	25 mm x 18.3 m	Luminous	0.4
GF010006	152 mm x 610 mm	Black	0.75
GF010005	140 mm x 140 mm	Black	0.15
GF120002	50 mm x 18.3 m	Clear	0.8
GF110002	50 mm x 18.3 m	Luminous	0.8
GF070002	50 mm x 18.3 m	Yellow	0.8
GF040002	50 mm x 18.3 m	Green	0.8
GF031002	50 mm x 18.3 m	Red/White	0.8
GF030002	50 mm x 18.3 m	Red	0.8
GF020002	50 mm x 18.3 m	Blue	0.8
GF010702	50 mm x 18.3 m	Black/Yellow	0.8
GF010004	152 mm x 18.3 m	Black	2.5
GF010003	102 mm x 18.3 m	Black	1.45
GF010002	50 mm x 18.3 m	Black	0.8
GF010001	25 mm x 18.3 m	Black	0.4

Technical Specifications

Material	<i>Abrasive grit consisting of aluminium oxide bonded to a polymer substrate. Solvent based acrylic emulsion adhesive backing. Product supplied with a moisture resistant release liner.</i>
Surface Finish	<i>Grit</i>
Product Height	<i>1.05 mm</i>
Min. Operating Temperature	<i>-10°C</i>
Max. Operating Temperature	<i>+60°C</i>
Environmental Resistance	<i>Suitable for indoor environments</i>
UV Resistance	<i>Yes</i>
Typical Applications	<i>Stairs, Ladders, Ramps, Walkways, Vehicles</i>
Installation Method	<i>Self-adhesive tape applied with pressure</i>
Adhesion Strength	<i>1.6 kg / 25 mm</i>
Coating Thickness	<i>0.05 mm</i>
Solvent Residue	<i>0.50%</i>
Release Force	<i>30g / 25 mm</i>

Additional Information



Installation Guide



Gripfoot Ramp Slip Test DIN 51130