



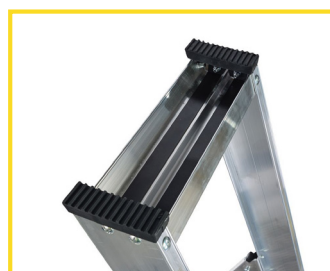
CLIMB-IT® ALUMINIUM STEPLADDERS



ASSEMBLY REQUIRED

DESCRIPTION

Our Climb-It® Aluminium Stepladders are lightweight and durable tools commonly used for reaching at height during household tasks or light construction projects. Their sturdy construction and foldable design make them convenient for storage and transportation.



NEW Magnetic Tool Tray

FEATURES

- ✔ Meets all strength requirements of BS2037 Class 1
- ✔ No tapes or flimsy arms to break
- ✔ Environmentally friendly treads, produced from low-carbon recycled aluminium
- ✔ Hard wearing, non-slip feet for maximum grip on all floor surfaces
- ✔ Deep 80mm serrated non-slip treads with ridge reinforcement & double riveting for maximum durability & comfort
- ✔ Magnetic tool tray for convenient storage



AP5M08Z

TECHNICAL DATA

No. of Treads	Platform Height mm	Overall Open Size H x W x D	Closed Height mm	Wt. kg	Without Handrails	With Handrails
					Model	Model
3	697	1347 x 427 x 890	1500	5.5	APSM03Z	APSM13Z
4	969	1619 x 459 x 1114	1795	6.5	APSM04Z	APSM14Z
5	1240	1890 x 491 x 1338	2090	7.5	APSM05Z	APSM15Z
6	1512	2162 x 523 x 1562	2385	8.5	APSM06Z	APSM16Z
7	1783	2433 x 555 x 1786	2680	9.5	APSM07Z	APSM17Z
8	2055	2705 x 587 x 2010	2975	10.5	APSM08Z	APSM18Z
10	2598	3248 x 651 x 2458	3535	13.5	APSM10Z	APSM10Z